

ES Series by



The Energy Star “**Green**” Machine
Doing Our Part for Energy & Water Conservation

ES Series

LOWEST
ENERGY STAR
RATING OF ITS
CLASS.....

.936 Gal/Rack



ES = Energy Savings
37 Racks/ 34 Gallons/ Per Hour
Powerful 1 1/2 HP Pump
Large Door Opening 20 1/2”
Dual Screens Protects the Pump

Same Great Quality
Same Great Results
Just Less Water, Energy, & Chemicals



At American Dish Service, Quality People, Designs,
and Products have been the foundations of our
organization for over *45 years*.

www.americandish.com

American Dish Service
Manufacturers of Ware Washing Equipment

900 Blake Street Edwardsville, KS 66111-3820 Toll Free (800) 922-2178 Phone (913) 422-3700 Fax (913) 422-6630

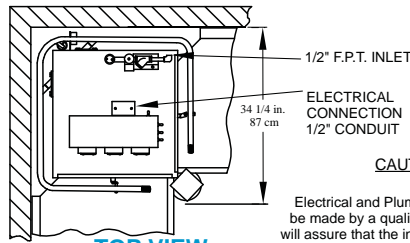
What can an ENERGY STAR qualified commercial dishwasher save in your establishment?

“Each ENERGY STAR qualified commercial dishwasher can save businesses about 90 Mbtu’s, and average of \$850/year on their energy bills. In addition, businesses can expect to save more than \$200/year and 52,000 gallons/year due to reduced water usage.”

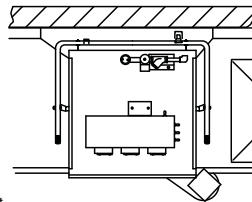
- Cleans 37 Racks Per Hour
- Convertible Design
- 20 1/5” Door Clearance
- Simple to Clean
- Stainless Steel Air Gap
- Powerful 1 1/2 HP Pump
- Large Capacity Scrap Accumulator



Available as a Straight-Thru, Corner, or 3-Doors-Up

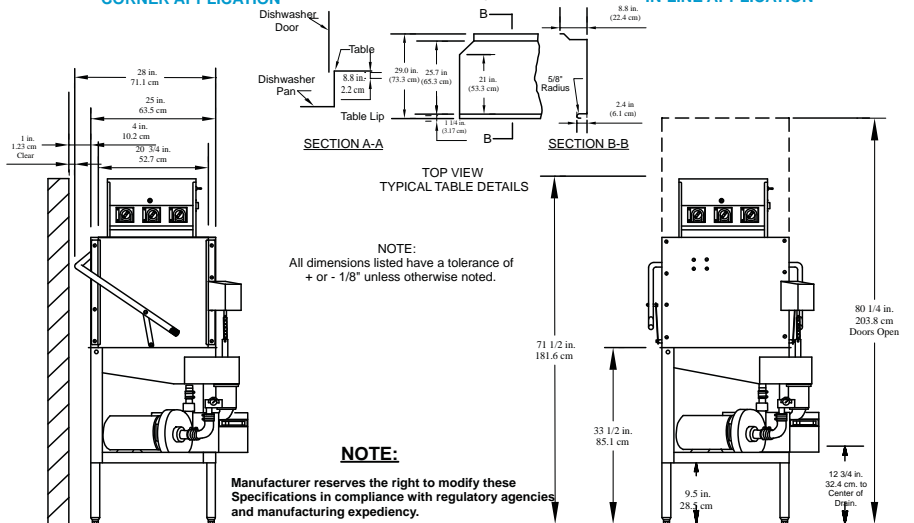


TOP VIEW
CORNER APPLICATION



TOP VIEW
IN-LINE APPLICATION

CAUTION:
Electrical and Plumbing connections must be made by a qualified Service Person who will assure that the installation is in compliance with all applicable federal, state, and local Health, Electrical, Plumbing, and Safety Codes.



SIDE VIEW

FRONT VIEW

Effective: 04/2009

© 2009 American Dish Service



WWW.AMERICANDISH.COM

AF/AFC-ES Series



	AF-ES	AFC-ES
RATED CAPACITY (Racks/Hour)	37	12
WASH TIME (Sec.)	50	75
RINSE TIME (Sec.)	30	60
DWELL (Sec.)	10	15
TOTAL CYCLE TIME (Sec.)	90	150
WATER TEMPERATURE (Supply)	120 °F Min. 49 °C Min.	
WATER CONSUMPTION	.936 Gal's Per Cycle 3.543 Liters Per Cycle	
MOTOR	1.5 HP 1.125 KW	
ELECTRICAL RATINGS	115 Volts Single Phase	
Connect to Supply Source using 10-12 AWG copper wires. Circuit Protection: 20 AMP Circuit Breaker or Fuse with a 20 AMP Rating.		
RACK SIZE	19 3/4" x 19 3/4" 50.2 cm x 50.2 cm	
DOOR CLEARANCE	30 3/4" x 20 1/2" 52.7 cm x 52.1 cm	
WATER INLET	1/2" F.P.T.	
DRAIN (Scrap Trap)	2" Pipe	
HEIGHT (Door Open)	80 1/4" 203.8 cm	
HEIGHT (Door Closed)	71 1/2" 181.6 cm	
WIDTH (Overall)	33 1/2" 85.1 cm	
WIDTH (Table to Table)	25" 63.5 cm	
DEPTH (Overall)	34 1/4" 86.9 cm	
SHIPPING WEIGHT	300 lb. 136 kg.	
SHIPPING DIMENSIONS	36" L x 36" W x 78" H 91.4 cm x 91.4 cm x 198.1 cm	

WARNING: Cancer and Reproductive Harm - www.P65Warnings.ca.gov

ADS has built a strong history based on Customer Service, Quality and Reliability. A Commitment to Excellence is the driving force behind American Dish Service.

900 Blake Street Edwardsville, KS 66111-3820 **Toll Free (800) 922-2178 Phone (913) 422-3700 Fax (913) 422-6630**