

American Dish Service

ATTACHMENT INSTRUCTIONS

Model ADC-44 or ADC-66

Side-Loader Attachment

High Temp or Chemical Sanitizer Conveyor Dishmachines

Listed by UL #E68594, NSF/ANSI 3, ASSE 1004 #301, LA Test Labs File M-780089, Mass. License P3-0111-306



If you have questions, call 800-922-2178 or visit our website at www.AmericanDish.com



DANGER

The electrical power supplied to this machine is an imminent hazard that could result in severe bodily injury or death if not properly installed or hooked up correctly. When working in the control box or on electrical parts, always disconnect power and tag-out before servicing. Replace cover to control box and other protective covers when finished servicing this equipment.

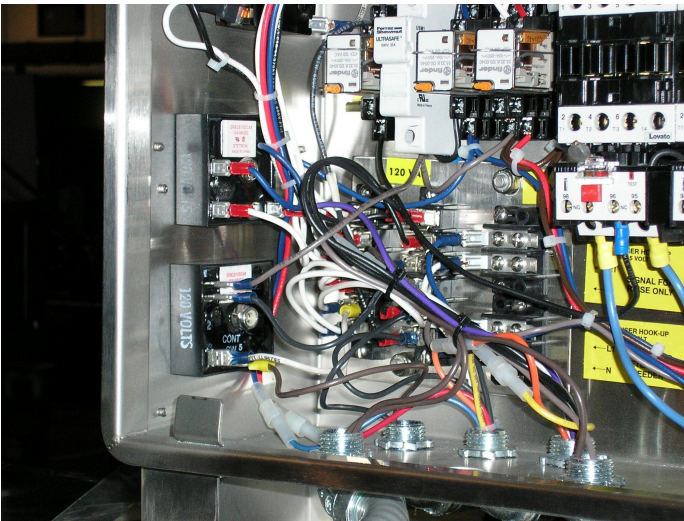


CAUTION

READ Manufacturer's Installation Manual before Using this Product. For your safety read and observe all cautions shown throughout these instructions. While performing installations described in this booklet, wear approved Personal Protective Equipment, including Safety Eye-Wear.

Item #1, There must be 36-37" from the entrance of the conveyor dishmachine to the wall in order to use this side-loader box in a corner. The side loader must be ordered as a left or right hand feed, it is not convertible.

Control Box Connections For Start Switch From Side-Loader Box



Showing the relay and time delay that control the start signal from the loader box start switch.



For shipping purposes, the connection to the start switch is removed, coiled and tied to the top of the machine.

Attaching Side Loader to the Conveyor Dishmachine

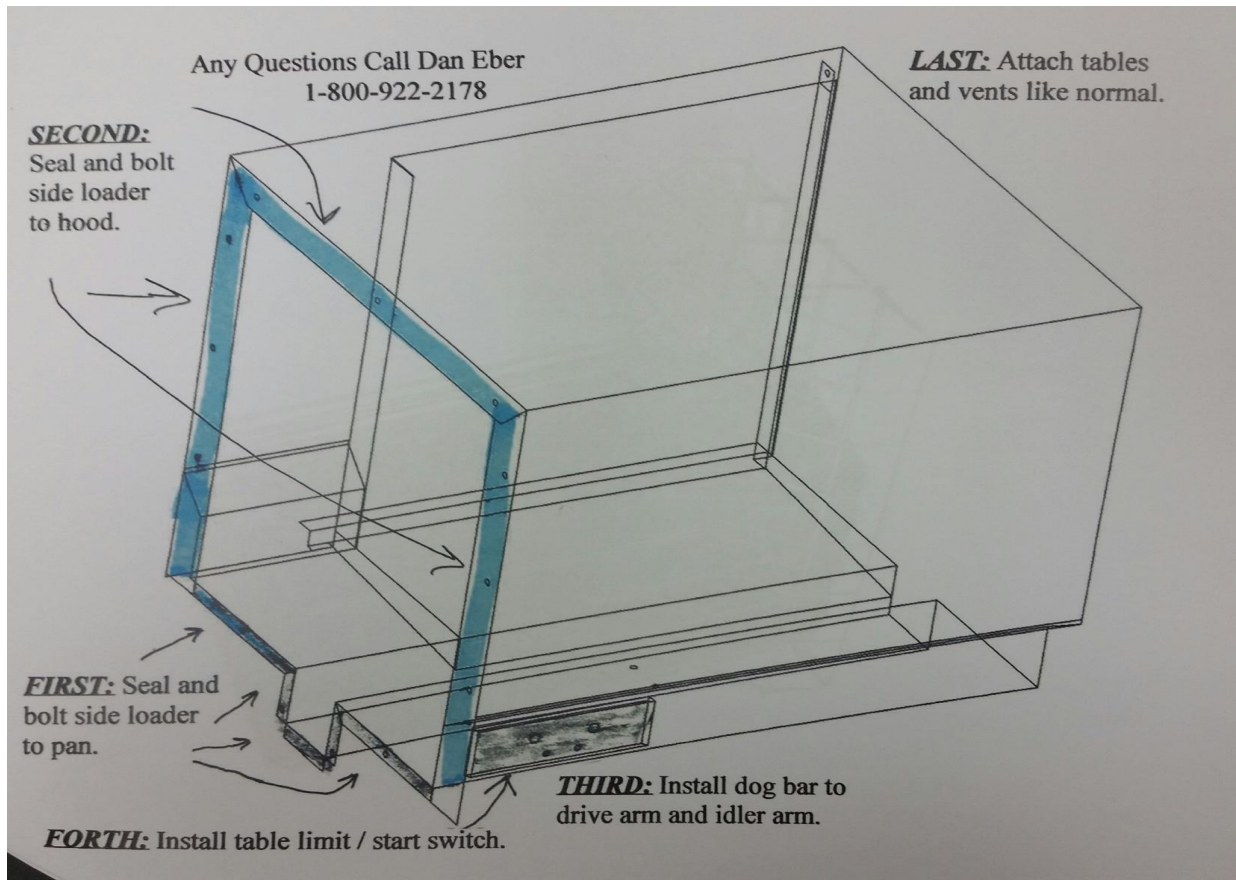
#1 Seal and bolt the side-loader to the dishmachine pan. #2 Seal and bolt the side-loader hood to the dishmachine hood. #3 install the conveyor arm with the dogs installed to the conveyor rocker arm located on the exit side of the dishmachine and the idler arm located at the entrance side. The rubbing block must be installed in the side-loader before installing the conveyor bar. #4 install the start switch to the pocket of the side-loader.



Lower pan of loader fits inside the DM tank and bolts



Showing start switch attached to the pocket



Switch Placement



Pocket for bumper start switch



Bumper attached thru pocket to tilt plate



Showing tilt plate and holder for switch shuttle



Switch bolted to shuttle and installed on tilt plate



Right to Left ADC-44 with Side-Loader attached



Left to Right ADC-66 with sideloader/vent attached

Placement of the Ramp Plate



Ramp bolts in place for racks to slide over the conveyor bar.



Showing the full ramp and the pocket for the start switch in upper left of picture



Ramp over the conveyor bar trough



Conveyor bar with loader dogs (285-6138)



Trough for conveyor bar and rubbing block guide



Rubbing block (285-6187) bolted in place



Ramp installed and held by two studs and lock nuts.



Conveyor bar attaches to rocker arm on clean side of DM

