

## Model 5AG-S TALL Specifications

U.S. REGISTERED PATENTS

### Standard 90 second timer, available 120 & 150 second timer

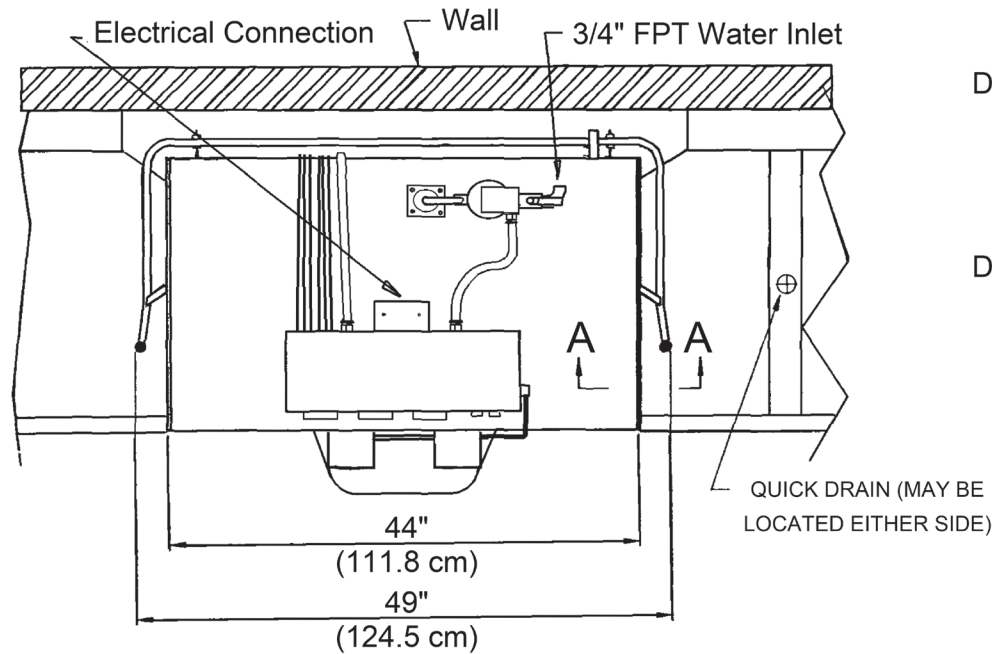
Rated Capacity (Racks/Hr.) . . . . .	74	56	46
Wash Time (Sec.) . . . . .	50	60	75
Rinse Time (Sec.) . . . . .	30	45	60
Dwell (Sec.) . . . . .	15	15	15
Total Cycle Time (Sec.) . . . . .	90	120	150
Water Temperature (Supply) . . . . .	120° F Min. (49° C Min)		
Water Consumption (Per Cycle) . . . . .	3.2 Gal. (12.1 Liter)		
Motor (2) . . . . .	1.5 HP (1.125 Kw)		
Electrical Ratings . . . . .	115 Volts (Single Phase)		

Connect to two Supply Sources using 10-12 AWG copper wires. Circuit Protection: 20 AMP Circuit Breaker or Fuse with a 20 AMP Rating. **OR**

Connect to Supply Source using 8 AWG copper wires suitable for at least 167° F (75° C). Circuit Protection: 40 AMP Circuit Breaker or Fuse with a 40 AQMP Rating.

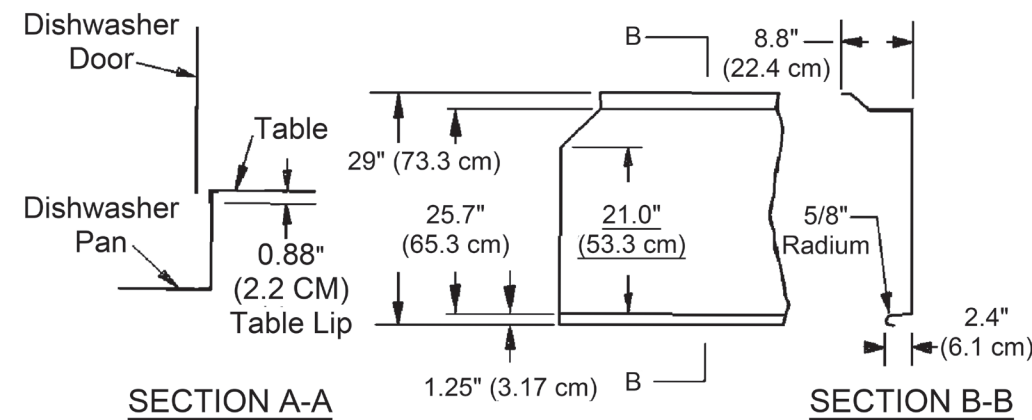
Rack Size (2) . . . . .	19.75" x 19.75v (50.2 cm x 50.2 cm)
Door Clearance . . . . .	27.5" x 21" (69.85 cm x 53 cm)
Water Inlet . . . . .	0.75" FPT
Drain (Scrap Trap) . . . . .	2.0" Pipe
Height (Door Open) . . . . .	93.5" (237.49 cm)
Height (Door Closed) . . . . .	78" (198.12 cm)
Width (Overall) . . . . .	49" (124.5 cm)
Width (Table to Table) . . . . .	44" (111.8 cm)
Depth (Overall) . . . . .	34" (86.4 cm)
Shipping Weight . . . . .	446 lb. (202.3 kg)
Shipping Dimensions . . . . .	60" L x 36" W x 78" H (152.4 cm x 91.4 cm x 198.1 cm)

### TOP VIEW



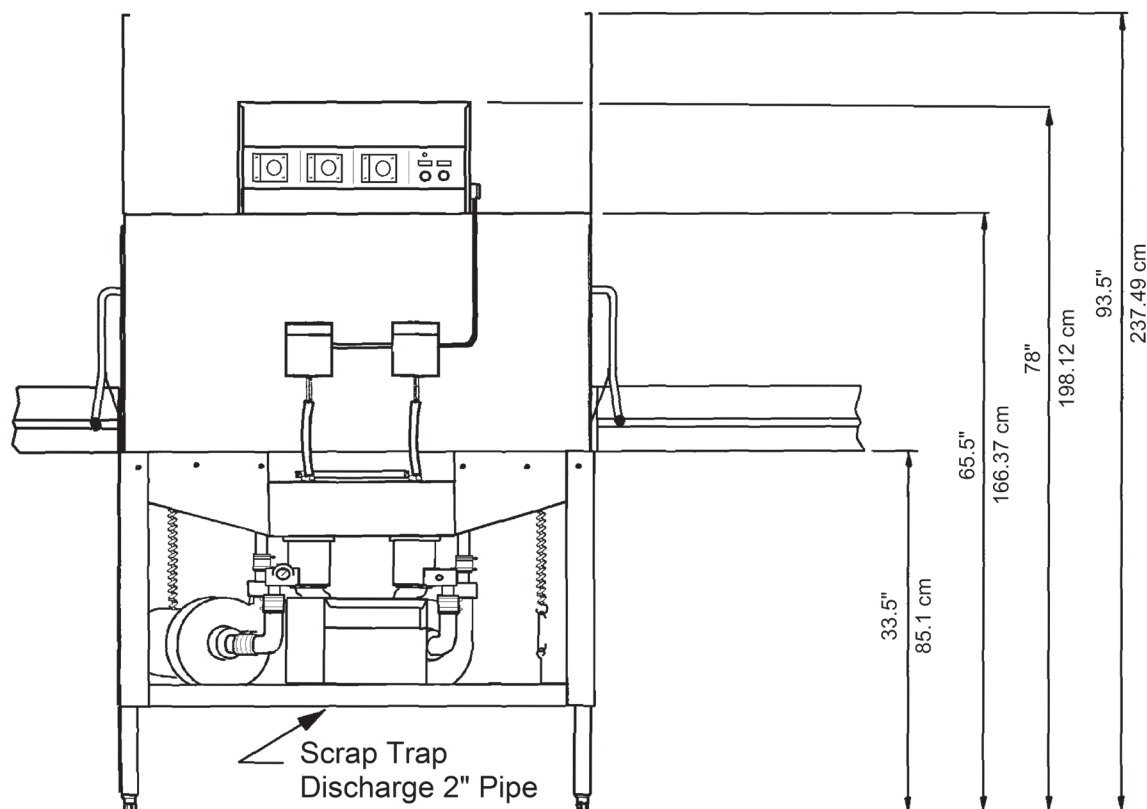
### TOP VIEW

#### Typical Table Details

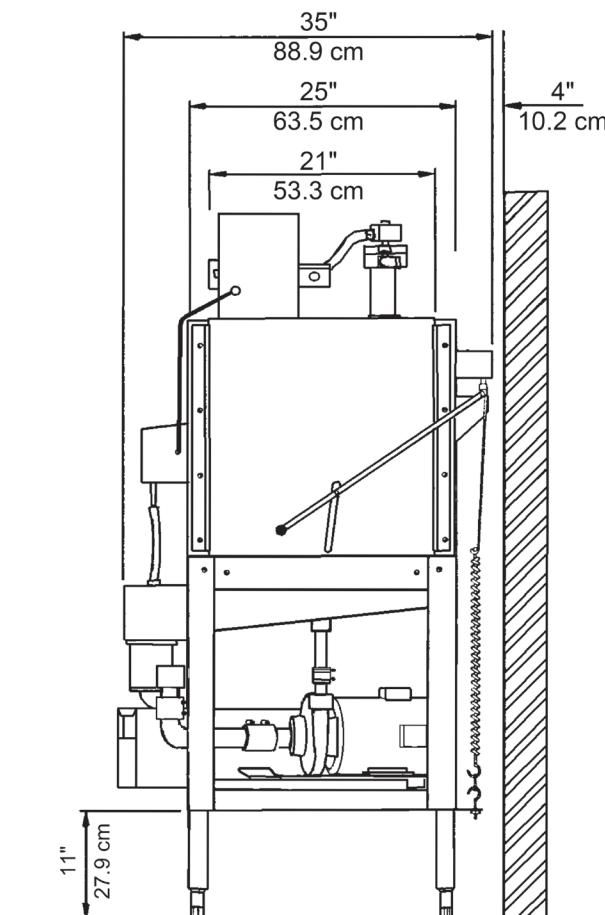


#### SECTION A-A

**Note:** All dimensions listed have a tolerance of (+) or (-) 1/8" unless otherwise noted.



### FRONT VIEW



### SIDE VIEW

### Note:

Manufacturer reserves the right to modify these specifications in compliance with regulatory agencies and manufacturing expediency.

### Caution:

Electrical and Plumbing connections must be made by a qualified Service Person who will comply with all available federal, state, and local Health, Electrical, Plumbing, and Safety Codes.