



American Dish Service
Manufacturers of Ware Washing Equipment

TECHNICAL SUPPORT MATERIAL

ADS Scrap Trap Information 2019

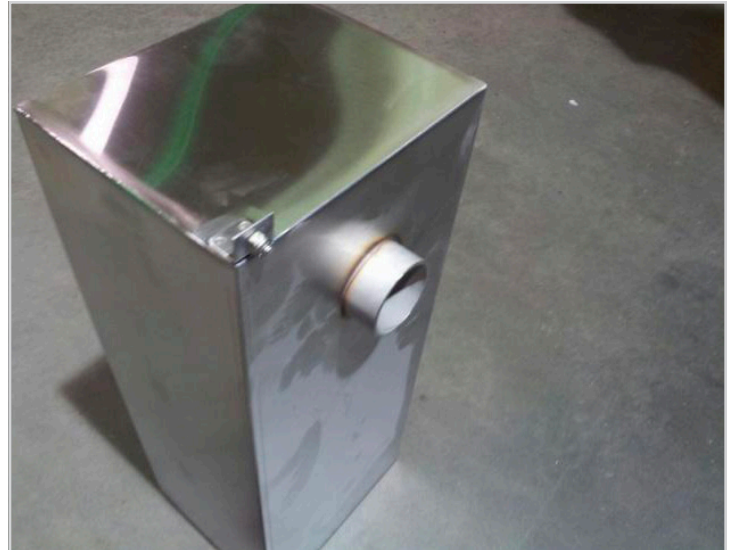
AF 3DS Scrap Trap (standard exit is bottom, no left side exit available)

Box dimension (089-9096): 9" Wide, 22" Long, 7.625" Deep

Tray dimension (089-9078): 8.75" Wide, 21.25" Long, 1.5" Deep



Dual exit scrap for AF3DS



Bottom exit for AF3DS

AFB Scrap Trap (standard exit is bottom)

Box dimension (089-9093): 7.75" Wide, 26" Long, 7.375" Deep

Tray dimension (089-9082): 7.5" Wide, 21.5" Long, 1.5" Deep



AFB top mount scrap trap



AFB rail for 7.75" box w/hold down

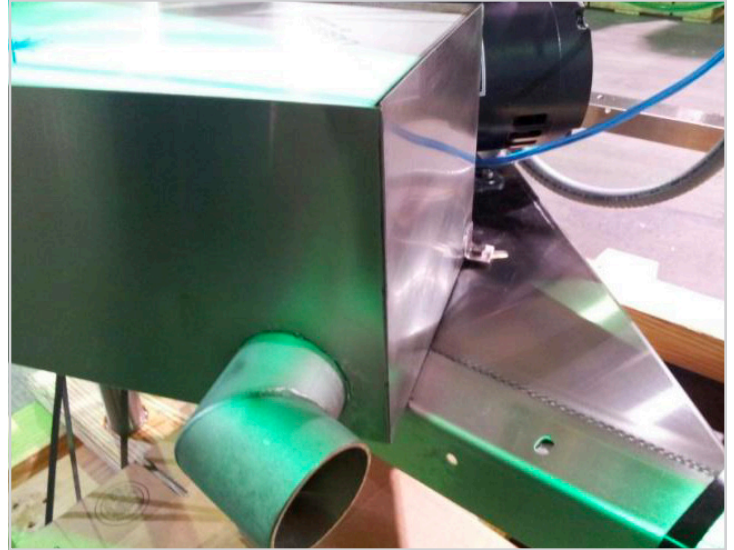
AFES Scrap Trap (standard exit is side)

Box dimension (089-9064 side exit, 089-9070 bottom exit): 9" Wide, 19" Long, 7" Deep

Tray dimension (089-9061): 8.75" Wide, 18.25" Long, 1" Deep



Bottom exit is available



Directed toward the rear exit is available

L903DWS Scrap Trap (standard exit is bottom)

Box dimension (051-5001): 9.5" Wide, 18" Long, 9" Deep

Tray dimension (089-9195): 9.25" Wide, 18.25" Long, 2" Deep

Lid dimension (89-9182): 9.75" x 10.5"

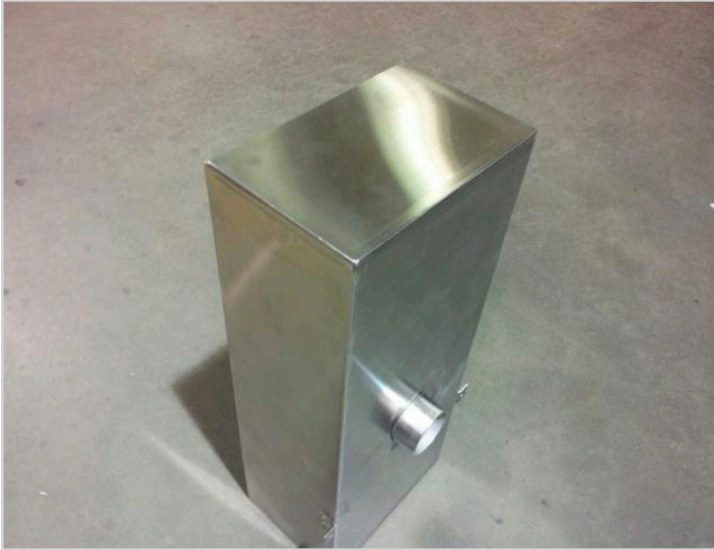


Available in bottom or rear exit, bottom exit is shown

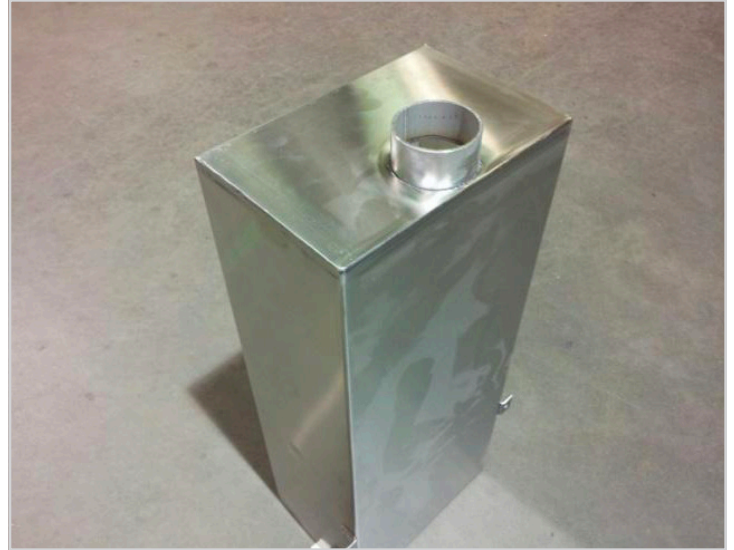
5AGES Scrap Trap (standard exit is rear)

Box dimension (089-9071 rear exit, 089-9073 bottom exit): 9" Wide, 22" Long, 6" Deep

Tray dimension (089-9069): 8.75" Wide, 21.25" Long, 1.5" Deep



Bottom exit is available



Rear exit is available

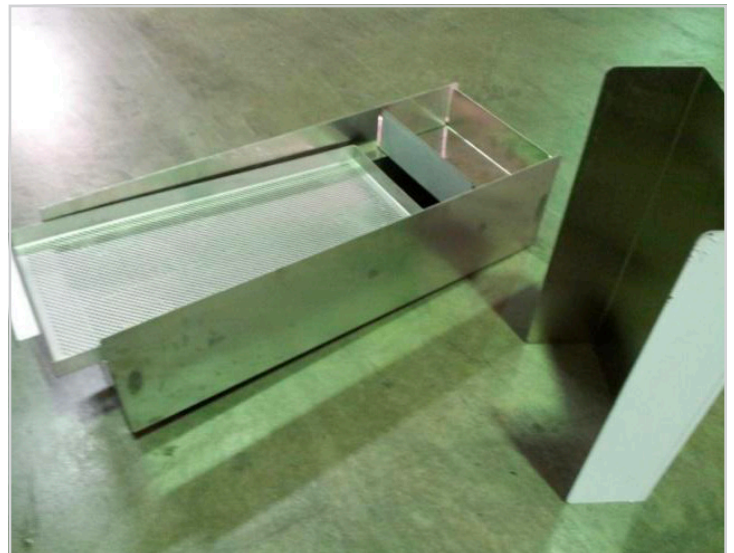
5CD Scrap Trap (standard exit is bottom)

Box dimension (089-9055): 10" Wide, 28" Long, 7.5" Deep

Tray dimension (089-9056): 9.75" Wide, 21.25" Long, 1" Deep



5CD right-front shown (box does bolt in place)



Box, cover and tray assembly
Available in bottom or rear exit

5AGS Scrap Trap (standard exit is bottom)

Box dimension (089-9055): 10" Wide, 28" Long, 7.5" Deep

Tray dimension (089-9056): 9.75" Wide, 21.25" Long, 1" Deep



Rear exit



Bottom exit

ADC-44 (all exit from bottom)

Box dimension (L-R 289-9111, R-L 289-9110): 9" Wide, 24" Long, 8.5" Deep

Tray dimension (289-9109): 8.625" Wide, 23.5" Long, 3" Deep

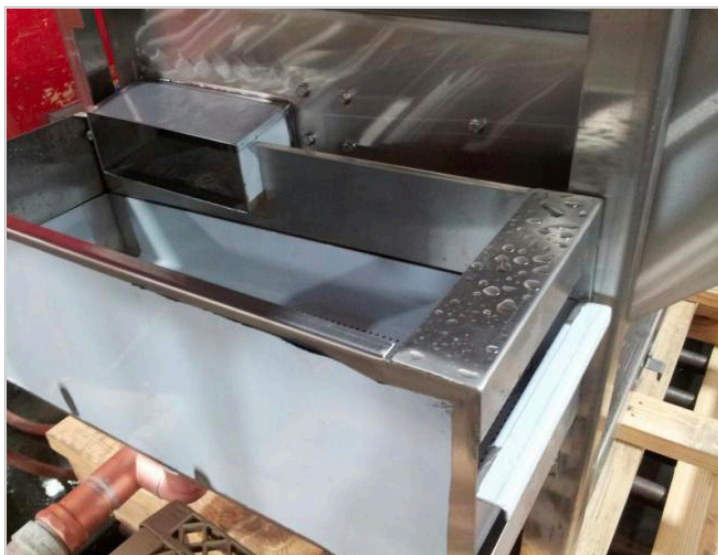


Showing left to right 44" conveyor

ADC-66 (all exit from bottom)

Box dimension (L-R 289-9125, R-L 289-9126): 9" Wide, 24" Long, 8.5" Deep

Tray dimension (289-9109): 8.625" Wide, 23.5" Long, 3" Deep



Showing left-right 66" conveyor

HT-25 / 34 Scrap Box (all exit bottom, mounted on right side)

Box dimension (389-9103): 9" Wide, 24" Long, 8.5" Deep

Tray dimension (289-9109): 8.625" Wide, 23.5" Long, 3" Deep



Scrap box is mounted on the right of machine

“Standard” Stand-Alone Single Scrap (051-1001) Used on older front mount AFB Models (standard exit is bottom)

Box dimension (051-1001): 9” Wide, 16” Long, 9” Deep

Tray dimension (089-9110): 8.5” Wide, 15.5” Long, 1.5” Deep

Three Legs and adjustable feet: 10.25” long (overall height 20.25”)

Lid dimension (089-9118): 9.25” x 8”

Drain: 2” male pipe thread, bottom exit



Available in bottom or rear exit, bottom shown

“Double” Stand-Alone Scrap (051-2001) (standard exit is bottom)

Box dimension (051-2001): 15” Wide, 16” Long, 10” Deep

Tray dimension (089-9129): 14.5” Wide, 14.5” Long, 1.75” Deep

Four Legs and adjustable feet: 10.25” long (overall height 20.25”)

Lid dimension (089-9133): 15.25” x 8”

Drain: 2” male pipe thread, bottom exit



Available in bottom or rear exit, bottom shown

“Dual” Slide-Mount Scrap (051-4001) (standard exit is bottom)

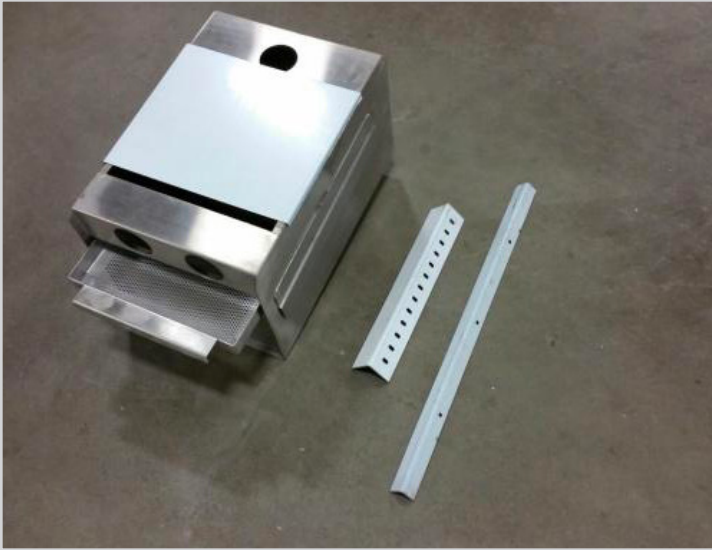
Box dimension (051-4001): 12” Wide, 18” Long, 10” Deep

Tray dimension (089-9154): 11.5” Wide, 16.5” Long, 1.75” Deep

Lid dimension (089-9158): 12.25” x 10”

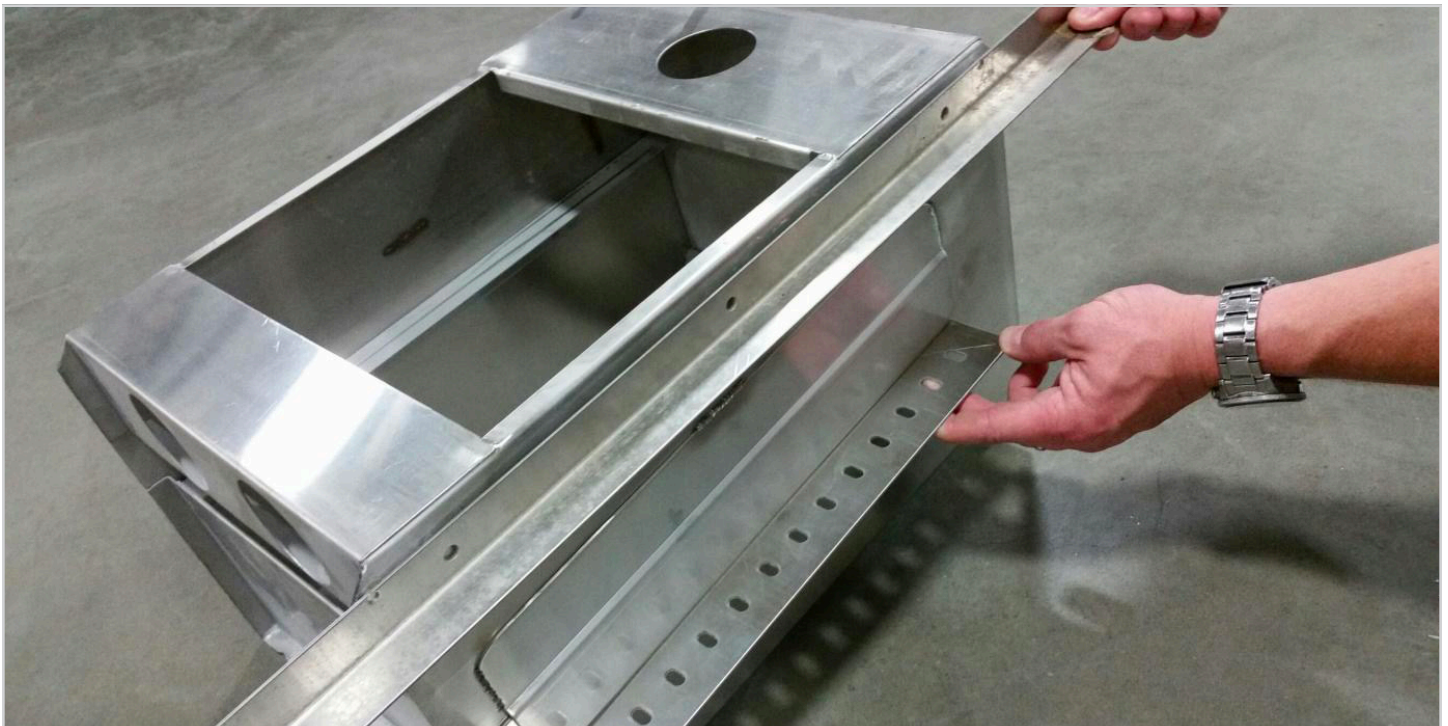
Upper Mounting bracket (089-9159): 24.5” long Slide Rail (089-9160): 14” long

Drain: 2” male pipe thread, bottom exit



Available in bottom or rear exit, bottom shown

Orientation of mounting the upper bracket and slide rail for Dual Scrap. The upper bracket bolts to the scrap box and is placed to the inside of the two up-right frames. Slide rail bolts blade up on side perimeter of the frame. (standard exit is bottom) Available in bottom or rear exit



American Dish Service

**Manufacturer of low and high temperature Commercial
Dishwashers and Glasswashers**

900 Blake Street | Edwardsville, Kansas 66111
Phone: 913.422.3700 | Toll-Free: 800.922.2178 | Fax: 913.422.6630
orders@americandish.com | americandish.com



an Ali Group Company



The Spirit of Excellence