



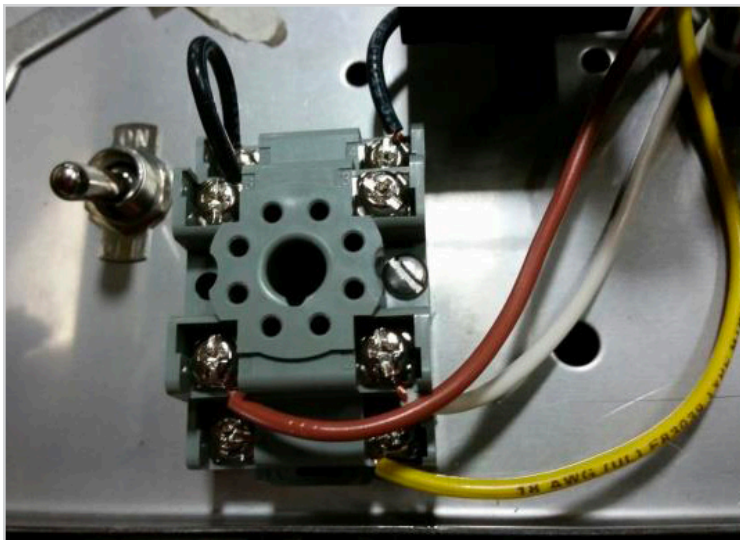
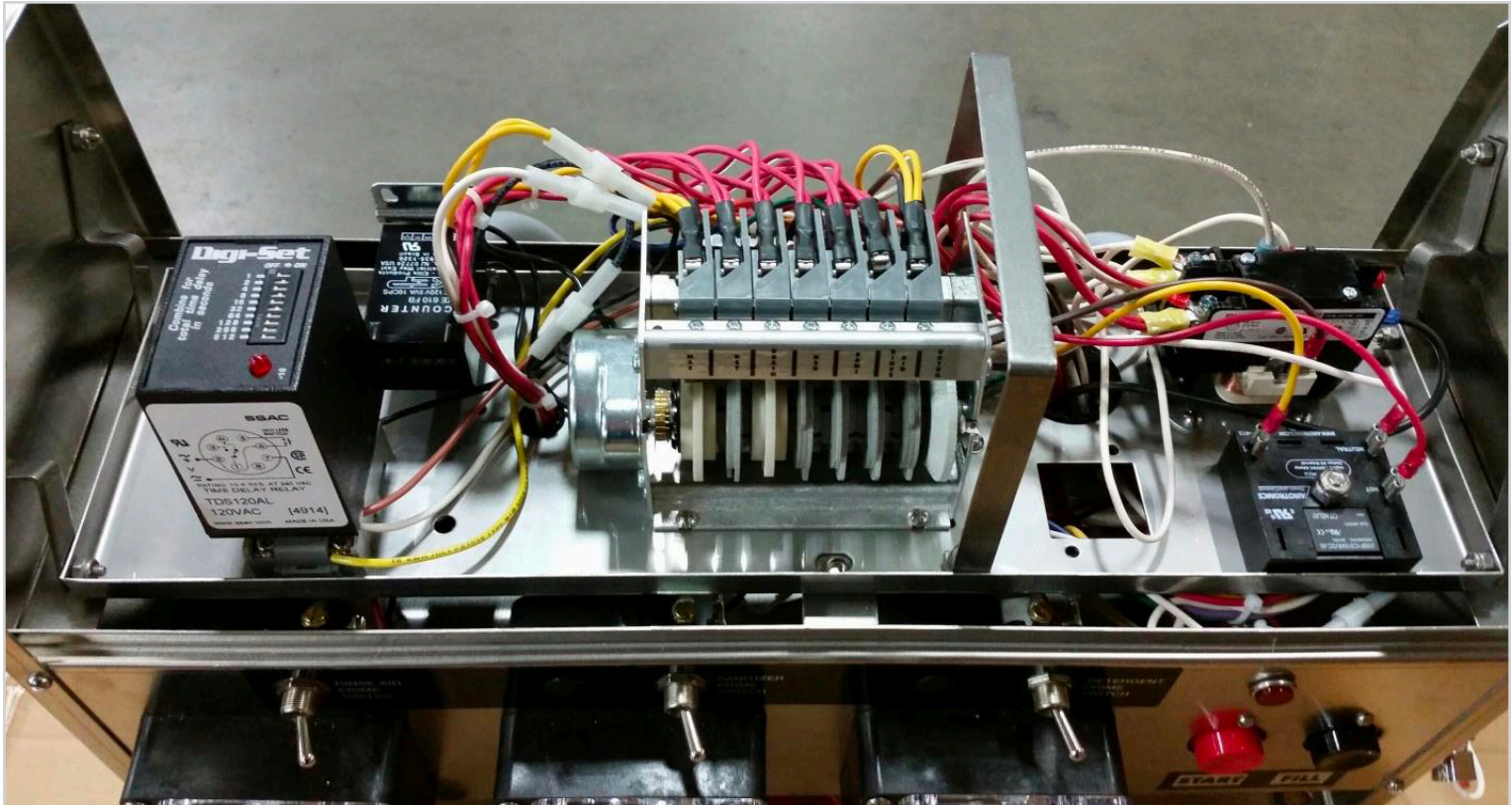
**American Dish Service**  
Manufacturers of Ware Washing Equipment

## TECHNICAL SUPPORT MATERIAL

# Low Temp Upright Dishmachine "Fill Delay Relay" Kit 088-1090

**(Caution: this kit will not work with 6-cam timers or fit into ET undercounter control boxes)**

The purpose of this relay is to provide a dwell (pause) in the cam timer rotation during the fill so the machine can fill with water in accounts that have low water pressure. The relay socket is installed in the control box and wired into the existing wire harness.



Socket installed as shown in diagram instructions



Wire connections made to the 7th switch on cam timer

# Installation Instructions

## 088-1090 Fill Delay Relay Kit

**NOTE – ALL SERVICE WORK SHOULD BE DONE BY AN AUTHORIZED SERVICE TECHNICIAN**

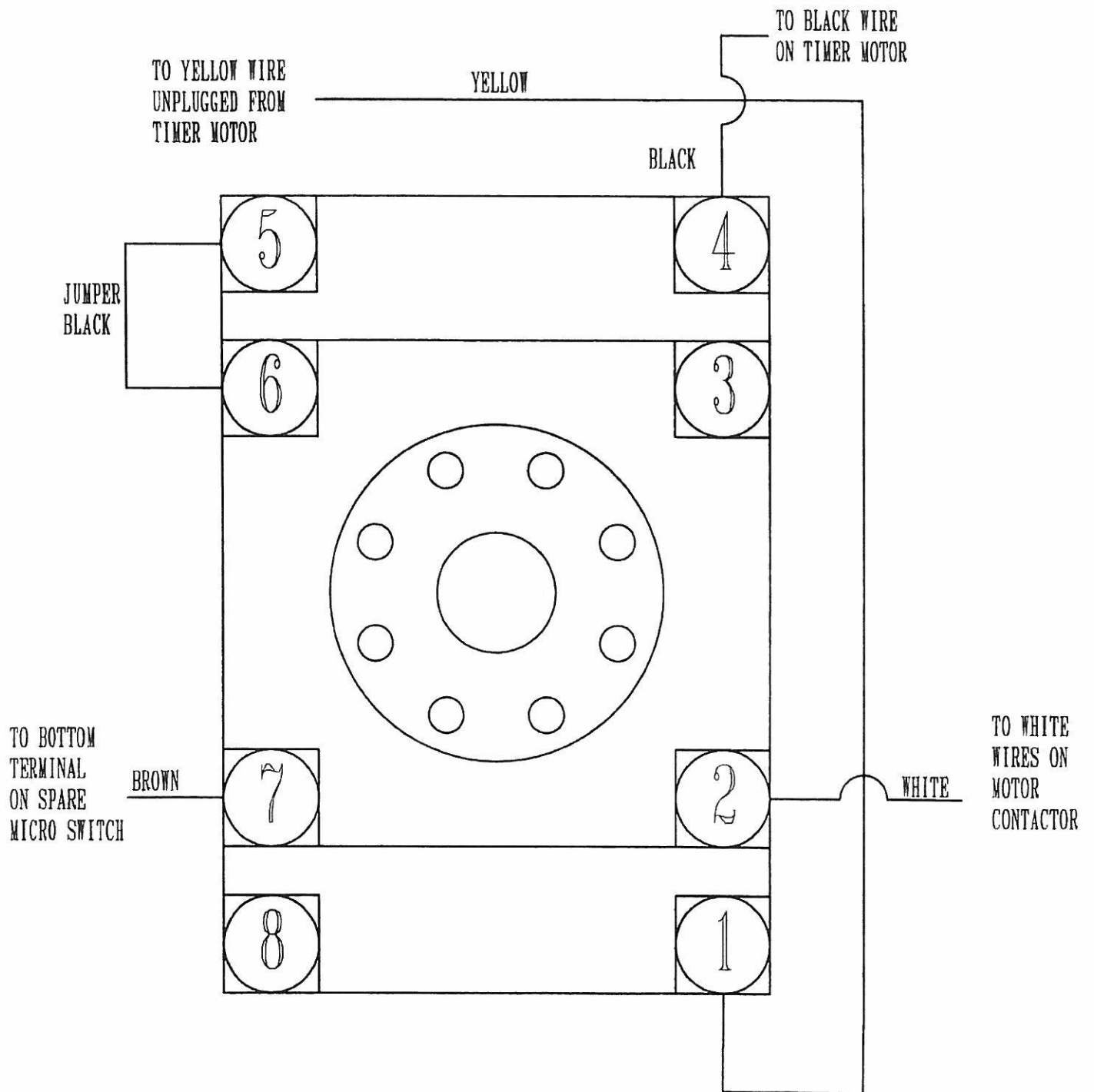
1. Turn off the tag out the power to the dishwasher and verify with a voltmeter. **WARNING – FAILURE TO TURN OFF THE POWER SUPPLY TO THE MACHINE CAN RESULT IN INJURY OR DEATH.**
2. Connect the wires supplied with this kit to the relay socket as follows:  
Yellow wire to terminal number 1  
White wire to terminal number 2  
Black wire to terminal number 4  
Jumper wire (short black wire) between terminals number 5 & 6  
Brown wire to terminal number 7
3. Bolt the relay socket to the shelf of the control box. (This may require drilling holes)
4. Plug the relay into the socket.
5. Unplug the yellow wire that is connected to one of the black wires on the timer motor.
6. Connect the yellow wire on terminal number 1 of the new socket to the yellow wire you unplugged in step 5.

7. Connect the black wire on terminal number 4 of the new socket to the black wire on the timer motor that you unplugged in step 5.
8. Connect the white wire on terminal number 2 of the new socket to the white wires on the motor contactor.
9. Connect the brown wire on terminal number 7 of the new socket to the bottom terminal of the motor micro switch (Burrp cam) on the timer. (This is the last micro switch on the right as you face the front of the control box. It should already have a yellow wire on the top terminal and a brown wire on the middle terminal.)
10. **VERY IMPORTANT** – The motor cam, sanitizer cam, and rinse aid cam must be adjusted. Move the motor cam so that the micro switch drops down in the notch right after the drain micro switch comes out of the notch. Set the motor cam so that it is only open for one notch. Set the sanitizer and the rinse aid to come on immediately after the motor micro switch comes out of the notch.
11. Determine the amount of additional time needed to fill the machine and move the DIP switches to the on position that will add up to that time. (Example:  $1+4+16=21$  seconds of delay)

# Bill of Materials

## 088-1090 Fill Delay Relay Kit

- |     |      |  |                          |  |  |
|-----|------|--|--------------------------|--|--|
| 1.  | 1 ea | Installation Instructions and diagrams |                          |  |  |
| 2.  | 2 ea | 091-3090                               | Socket, Time Delay Relay |  |  |
| 3.  | 1 ea | 091-3089                               | Relay, Timer Delay       |  |  |
| 4.  | 2 ea | 098-1106                               | 6-32 X 1 1/8" SS Screw   |  |  |
| 5.  | 2 ea | 098-2106                               | 6-32 Locknuts            |  |  |
| 6.  | 1 ea | 18g                                    | yellow wire              |  |  |
|     | 10"  | 091-5105                               | yellow 18g wire          |  |  |
|     | 1 ea | 091-5224                               | male molex pin           |  |  |
|     | 1 ea | 091-5223                               | male molex housing       |  |  |
| 7.  | 1 ea | 18g                                    | white wire               |  |  |
|     | 16"  | 091-5108                               | white 18g wire           |  |  |
|     | 1 ea | 091-5247                               | 1/4" spade connector     |  |  |
| 8.  | 1 ea | 18g                                    | black wire               |  |  |
|     | 10"  | 091-5109                               | black 18g wire           |  |  |
|     | 1 ea | 091-5222                               | female molex pin         |  |  |
|     | 1 ea | 091-5221                               | female molex housing     |  |  |
| 9.  | 1 ea | 18g                                    | black jumper wire        |  |  |
|     | 2"   | 091-5109                               | black 18g wire           |  |  |
| 10. | 1 ea | 18g                                    | brown wire               |  |  |
|     | 10"  | 091-5104                               | brown 18g wire           |  |  |
|     | 1 ea | 091-5202                               | .187 spade connector     |  |  |



## **American Dish Service**

---

**Manufacturer of low and high temperature Commercial  
Dishwashers and Glasswashers**

900 Blake Street | Edwardsville, Kansas 66111  
Phone: 913.422.3700 | Toll-Free: 800.922.2178 | Fax: 913.422.6630  
orders@americandish.com | [americandish.com](http://americandish.com)



an Ali Group Company



The Spirit of Excellence