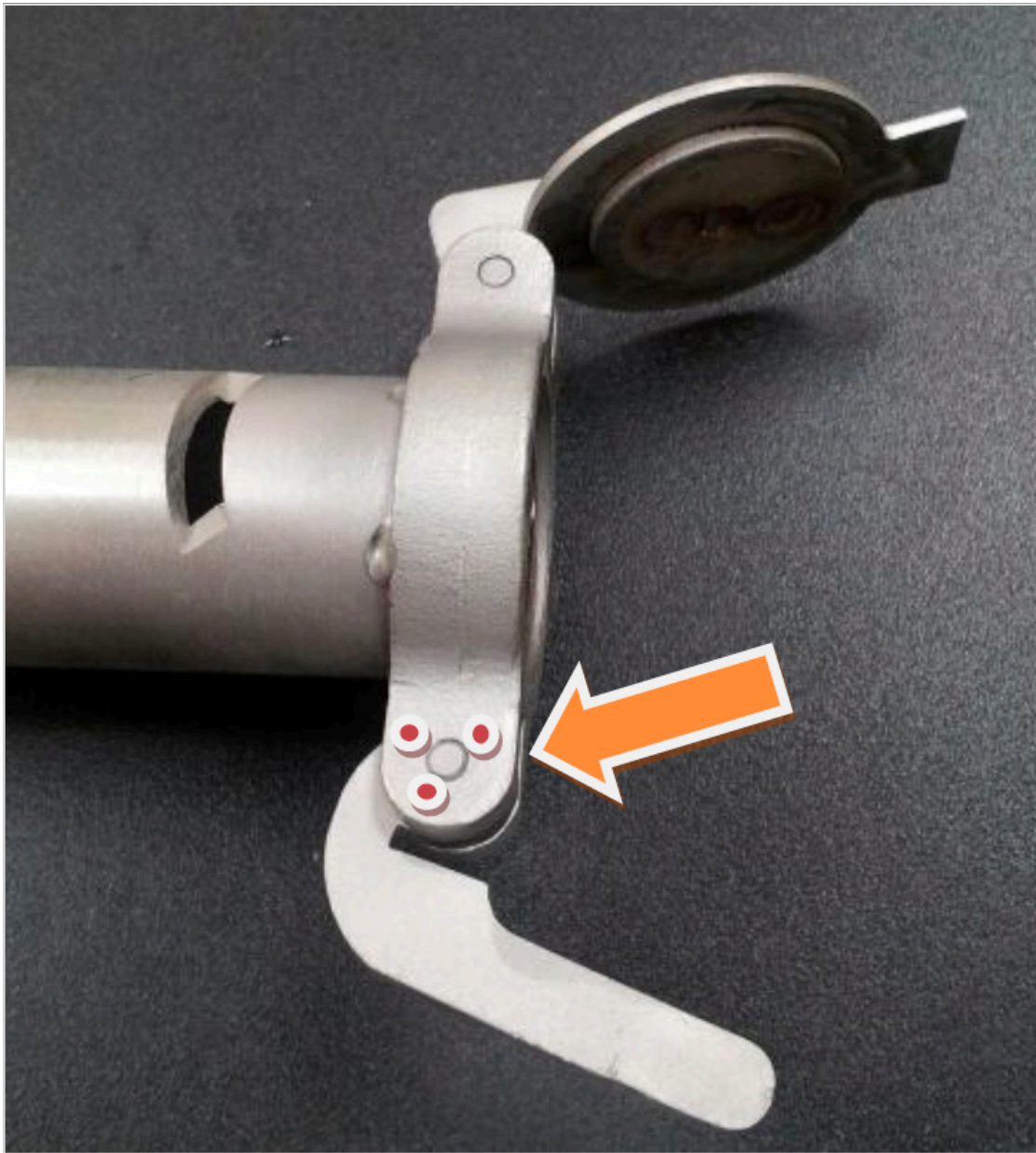


## Field Replacement of Conveyor Spray Arm End Cap



When a captive endcap or latch becomes defective but the mount is still welded to the spray arm tube, they can be replaced by driving out the 1/8" dowel pin (098-8010) with a 1/8" punch and hammer. Then the new cap (285-6196) or latch (286-6209) can be replaced in the mounting. New pivot pins can be pressed into the holes to hold. To secure the pin once it is pressed into place, use a sharp center-punch and peen three small dents (see red dots) into the metal surrounding the pin. This will stretch the mount's metal to wedge the pin in place.

## **American Dish Service**

---

**Manufacturer of low and high temperature Commercial  
Dishwashers and Glasswashers**

900 Blake Street | Edwardsville, Kansas 66111  
Phone: 913.422.3700 | Toll-Free: 800.922.2178 | Fax: 913.422.6630  
orders@americandish.com | [americandish.com](http://americandish.com)



an Ali Group Company



The Spirit of Excellence