



American Dish Service
Manufacturers of Ware Washing Equipment

TECHNICAL SUPPORT MATERIAL

**Routine & Preventative Maintenance
ADS PUMP SEAL #092-2001
INSTALLATION**



Showing the pump housing #082-6301, motor side



Pump housing, pump side



Use liquid soap to lubricate seal bore



Ceramic, install with rubber boot on bottom



Installing tool #099-6007 to press to bottom of bore



Inspect back side, seal sits flush to metal



Install motor to housing, caution of ceramic



Black smooth face goes on motor shaft next



Press black portion of seal w/ installing tool



Press seal so 1/8" below the threads



Place spring on w/spring cap toward impeller



Screw on impeller by hand, RH threads

IDENTIFYING IMPELLERS AND PUMP COVERS



Standard closed face #082-6303 (AF-3D-S, ET-AF, 5AG-S)



Open face #082-6306, (L3DW-S)



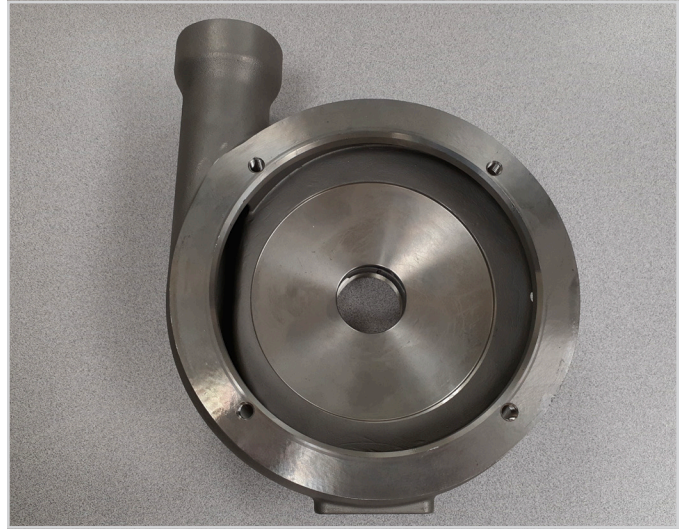
Open-Modified face #082-6312, (AF-ES, 5AGES)



O-Ring gasket pump cover #082-6307 for open impellers



Standard, cork gasket, pump cover #082-6302 for closed impeller



Stainless Pump cover 082-6324



Stainless Pump housing 082-6323



Stainless Pump impeller 082-6326

American Dish Service

**Manufacturer of low and high temperature Commercial
Dishwashers and Glasswashers**

900 Blake Street | Edwardsville, Kansas 66111
Phone: 913.422.3700 | Toll-Free: 800.922.2178 | Fax: 913.422.6630
orders@americandish.com | americandish.com



an Ali Group Company



The Spirit of Excellence