

ET Series

American Dish Service™
Manufacturers of Ware Washing Equipment

The Most Reliable Undercounter

Available with pumped drain & tank heat
Perfect for restaurants, bars, and fast food operations

STANDARD FEATURES

- Easy to load and unload
- Short door length (10") keeps the aisle open and clear
- Dual screens protects wash pump from debris
- Small footprint fits most applications



Pumped Design



Ergonomic Design



Screens



Optional Heat

Maintains tank temperature rack after rack.

© **American Dish Service**

900 Blake Street | Edwardsville, Kansas, 66111
Phone: 913.422.3700 | Toll-Free: 800.922.2178 | Fax: 913.422.6630
orders@americandish.com | americandish.com

For detailed specifications, go to
www.americandish.com

ET Series

The Economical Answer to Your Warewashing Needs

Standard Features

- 1 ½ HP wash pump
- Sustainer heater helps maintain tank temperature between loads
- On board chemical pumps included
- Pumped drain – up to 20" high & 5' away
- Tall version available
- Available glass ware cross arm

ET Series Specifications

U.S. REGISTERED PATENTS

ET Series

90 second cycle standard 120 & 150 second timers available

Rated Capacity (Racks/Hr.)	30	24	20
Wash Time (Sec.)	45	60	75
Rinse Time (Sec.)	30	45	60
Dwell (Sec.)	15	15	15
Total Cycle Time (Sec.)	90	120	150

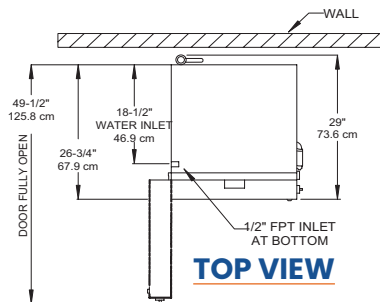
Water Temperature (Supply) 120 F Min. (49° C Min)
 Water Consumption (Per Cycle) . . .1.7 Gal. (6.4 Liter) NSF
 Motor (Pump)1.5 HP (1.125 Kw)
 Sustainer Heater1/20 HP (0.37 Kw) 1/2 Kw
 Electrical Ratings115 Vac 20 Amp Breaker
 50/60 Hz, 1 Phase

Connect to Supply Sources using 10-12 AWG copper wires using non-time delay fuse of 20 amp rating or 20 amp circuit breaker.

Rack Size19.75" x 19.75" (50.2 cm x 50.2 cm)
 Door Clearance ("M" Series) . . . 11" x 22.25" (27.9 cm x 56.5 cm)
 Door Clearance ("3" Series) . . .14" x 22.25" (35.8 cm x 56.5 cm)
 Water Inlet0.5" FPT
 Drain (Scrap Trap)0.75" I.D. Hose by 60" Long
 Pump-Out Height (Maximum)20" (50.8 cm)
 Height of Standard ET33.5" Min - 34.5" Max
 (85.1 cm Min - 87.6 cm Max)
 Height of ET-AF-336.5" Min - 37.5" Max
 (92.7 cm Min - 95.2 cm Max)
 Width (Overall)25.5" (64.8 cm)
 Depth (Overall)29" (73.6 cm)
 Shipping Weight ("M" Series)270 lb. (122.5 kg)
 Shipping Weight ("3" Series)274 lb. (124.3 kg)
 Shipping Dimensions ("M" Series) 36" L x 36" W x 41" H
 Shipping Dimensions ("3" Series) 36" L x 36" W x 44" H



Need a free standing warewashing center in only 48" of space? Combine our ET-AF under-counter with our stainless steel table package.



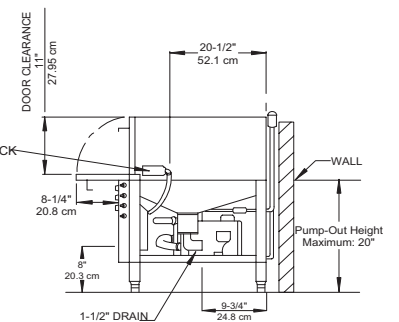
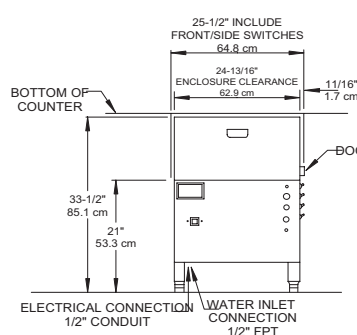
CAUTION:

Electrical and Plumbing connections must be made by a qualified Service Person who will comply with all available federal, state, and local Health, Electrical, Plumbing, and Safety Codes.

Manufacturer reserves the right to modify these specifications in compliance with regulatory agencies and manufacturing expediency.

Note:

All dimensions listed have a tolerance of (+) or (-) 1/8" unless otherwise noted.



Effective 2/2023



Warning: Cancer and Reproductive Harm - www.P65Warnings.ca.gov



American Dish Service™
 Manufacturers of Ware Washing Equipment



© American Dish Service

900 Blake Street | Edwardsville, Kansas, 66111
 913.422.3700 | Toll-Free: 800.922.2178 | Fax: 913.422.6630
orders@americandish.com | americandish.com

ET Series R1.00